

T O W N S H I P

C H E S T E R

WEST DIVISION

2

3

10

4

8

9

6

7



N

||

SCALE 1" = 300'

A	B	C	D
E	F	G	H
I	J	K	L
M	N	O	P

MUNSON TWP. JAN 1955

MATCH LINE





SEC. 1

SEC. 3

HATHAWAY TRACT DIVISION EAST

SCALE 1"=300'

A	B	C	D
E	F	G	H
I	J	K	L
M	N	O	P

MUNSON TWP. JAN 1955

ROAD AUBURN ROAD

138.90 A

24.33 A

32.25 A

70.91 A

25.59 A

56.986 A

20 A

M. KIBLER  
156-232 247-81

23.65 A

260-4 P.M.  
WHITRIGHT

218-155 J. TURNER

245-514 J. SAMUES

223-151 E.G. WHITRIGHT

229-91 C. HOURIET

221-221 C. HAZEN

A. HINE  
255-555

221-158 B. L. C. INC.

221-160

255-361 P. MULLALLY

6.16 A

225-468 J.J. Boyle

5 A

260-7 F. FEINGOLD

5 A

221-417 WEARSCH ROAD

114.08 A

31.97 A

7.78 A

208-614 H. SCHNEIDER

221-416 B. L. C. INC.

39.63 A

206-305 M. JANU

P. HALL  
260-208

5

B. L. C. INC.

4.329 A

K. DRENSKE  
260-152

B. L. C. INC.  
248-252

B. L. C. INC.  
260-420

B. L. C. INC.  
263-110

232-234

B. L. C. INC.

242-590

L. NAGY  
242-158

J. KUCHARICH  
251-68

B. L. C. INC.  
222-235

15 A

3.01 A  
W. MATHEWS  
232-311

M. HOCKMAN  
262-30

L. SCHIEMAN  
255-43

E. MYERS  
254-233

B. L. C. INC.  
263-121

12.02 A

6

B. L. C. INC.

B. L. INV. CO. ALLOTMENT  
VOL. 1 - PG. 40-43  
See Sheets 11-R-1&2

B. L. INV. CO.

2375 A

A. HAZEN  
159-357

114-530

A. HAZEN

221-416 B. L. C. INC.

115.70 A

22.27 A

224-378

27.04 A

178-80 B. L. C. INC.

179-160 B. L. C. INC.

80 A

B. L. INV. CO.  
178-486

F. BAZNIK  
4221-285

BASS LAKE











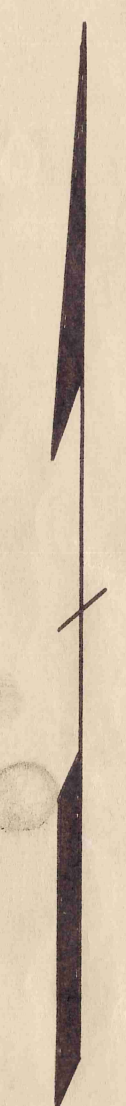
2  
43 A

1 225-85 .375 A  
2 225-85 .375 A  
3 239-390 .50 A

66  
66  
31  
163

C L A R I D O N T O W N S H I P

N



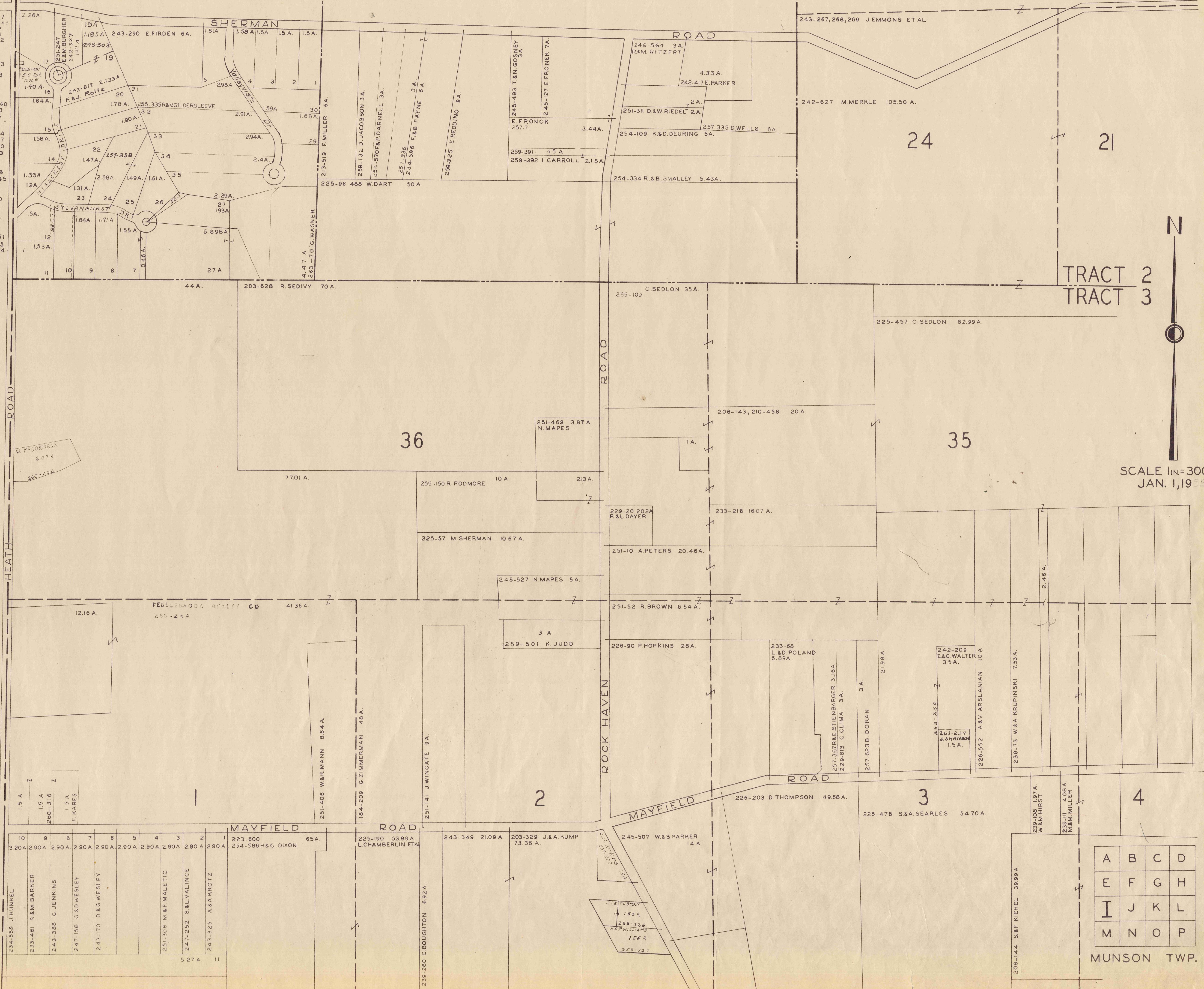
SCALE 1"=300'

A	B	C	D
E	F	G	H
I	J	K	L
M	N	O	P

MUNSON TWP.  
JAN 1955

CHAMPION TRACT BARBER TRACT

- 1 R. EBERT 259-567
- 2 H. R. BERT 259-567
- 3 A. VODEGEL 259-86
- 4 E. REINKE 257-461
- 5 K&A. ERTLE 257-632
- 6
- 7 D. TEMPLE 243-42
- 8 C&I. RUDD 235-217
- 9 Q&R. GROTH 255-383
- 10
- 11 H&M. HATCH 254-423
- 12 C&M. BLEADINGHEISER
- 13
- 14 A. TAYLOR 265-87
- 15 R&M. DAVIS 239-582
- 16 R&W. MORTON 242-240
- 17 G&J. BENEDUM 255-473
- 18 W&M. SUMMERHILL 257-446
- 19
- 20 E. WACTERS 260-364
- 21 C. MELDANE 260-307
- 22 G. MITCHELL 245-380
- 23 W. KROWARZ 260-273
- 24 L&R. LONGSTREET
- 25 R&L. LONGSTREET
- 26
- 27 A. NAHR STEDT 259-345
- 28 W. KROWARZ 257-330
- 29
- 30 A. BEUSE 257-440
- 31
- 32 C&D. PAINE 257-359
- 33 L&A. SWANSON 255-479
- 34
- 35 263-140 R. SANDERS
- 36 O. BLODGETT 260-351
- 37 J. GOTTSCHLING 259-305
- 38 A. ZEKANIS 257-374

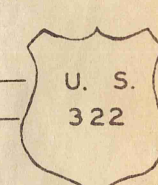
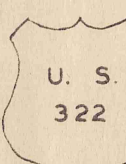


CHESTER TOWNSHIP ROAD

N  
SCALE 1 IN = 300 FT.  
JAN. 1, 1955

A	B	C	D
E	F	G	H
I	J	K	L
M	N	O	P

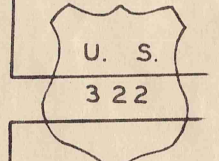
MUNSON TWP.





TRACT TWO  
TRACT THREE

FOWLERS MILL  
SEE PAGE 11Q



SCALE 1 IN. = 300 FT.  
JAN. 1, 1955

A	B	C	D
E	F	G	H
I	J	K	L
M	N	O	P

MUNSON TWP.

255-497R WOLCOTT 1.5 A  
254-281E & O. SIPAN 1.5 A  
195-579 E. WEIDLEIN 35 A

SHERMAN ROAD

255  
354

H. FINK 1.5 AC

41.64 AC

13  
20 AC

141.46 AC

12

66.06 AC

9

233-210

5 AC  
206-229 H. HAZEN  
192-385  
229-489

M. HAZEN 19.15 AC

8

TRACT 2  
TRACT 3

223-226 C&F FINK

199-227 A. OSBORNE

TRACT TWO  
" THREE

SEE 11 - Q

15.98 AC

24.63 AC

37.02 AC

M. WOODRUFF ET AL

10 AC

50.60 AC

33

192-331 L. TUTTLE

237-490  
1.5 AC  
M. MOORE

254-398

234-173 219 AC

182-176 V&H. WARNER

32

182-175  
1 AC  
V. WARNER

ROAD

ROAD

M A Y F I E L D R O A D

C. SPAULDING

4.47 AC

251-505  
38 AC  
R. JOHNSON  
As Surrogate

32.25 AC

10.76 AC

14.17 AC

62 AC

5.61 AC

218-38

J. FRIEL

220-405

3.10 AC

C. SPAULDING

7.17 AC

208-437,440

221-376

C. CARES, JR.

61.33 AC

86.68 AC

5 AC

225-258 B. BUDENZ

5 AC

251-301 J. NOZAR

9.96

233-342 M&E. KUEHNEL

5.04 AC

210-546

V. McDONALD  
6 AC

245-121

7

199-466

R. STONE

8

81.535 AC

38.61 AC

1.02 AC

4 AC

9

25 AC

206-392 M. TELLING

206-352 P. VARNEY

38.78 A

218-587

L. TUTTLE

50 AC

162-61 P&D. VARNEY

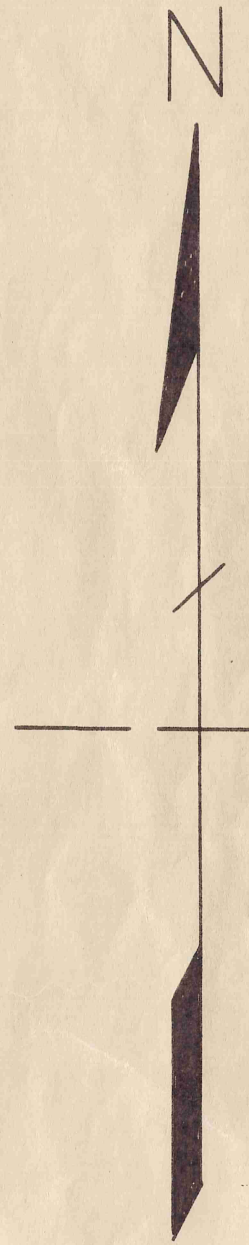
192-331

220-141 J.G. GROSSMAN

177-46 A. VESE 5 AC

225-393 SISTERS OF NOTRE 11.18 AC

260-72



A	B	C	D
E	F	G	H
I	J	K	L
M	N	O	P

SCALE 1" = 300 FT.

MUNSON TWP.  
JAN 1955



TRACT TWO  
TRACT THREE

TRACT TWO  
TRACT THREE

CLARION TOWNSHIP

A	B	C	D
E	F	G	H
I	J	K	L
M	N	O	P

SCALE 1" = 300 FT.

MUNSON TWP.  
JAN 1955

CHESTER TOWNSHIP

5.27 A.	11
247-223 H.M. KINGSMILL 5.27 A.	12
233-564 M.E. HAVEL 5.27 A.	13
233-504 E.M. KACHKOWSKY 5.27 A.	14
5.27 A. 255-598	15
255-521 C&E. EPPICH 5.27 A.	16
254-12 J.&I. BRINKMAN 5.27 A.	17
254-223 R.&R. HACHTEL 5.27 A.	18
257-237 A&M. GREGORY 5.27 A.	19
255-85 E.&A. MITTON 5.28 A.	20
247-419 A. HUSZAR 5.27 A.	21
247-341 A. POLEY 5.32 A.	22

223-600 65 A. 254-586 H&G. DIXON

234-7 J. UDVARDI ET AL 42.25 A.

192-279 E. VACKER 100 A.

152-603 H. KRICHBAUM 50 A.

178-568, 180-202 M. HASEROT 60.87 A.

201-131 203-235 50.79 A.

260-200 J. McGRATH 91.07 A.

246-380 M.E. HAVEL 306<sup>+</sup> 0.2A

226-541 J. CARTWRIGHT 0.2A

251-355 M. EHRLECK 0.2A

255-329 H&M. SCHWABER 1.40A

255-318 F. OPARA ET AL 9.10 A

148.47 A.

254-547 L&I. GLOVER 2.04

254-548 H&L. GLOVER 2.04

265-556 J&L. GENOVESE 2.73A

257-376 2.29A

257-375 C&L. FORD 9.02A

J. FELBERG

G&M. SCHEVE

C. FORD

4.11

459-131

233-555, 239-85 C. WRIGHT ET AL 36.60 A.

260-347 C. HUBER 35.70 A.

225-160 L. CHAMBERLIN ET AL 53.99 A.

239-260 C. BOUGHTON 69.2 A.

243-349 2109 A.

203-329 J.&A. KUMP 74.86 A.

226-203 D. THOMPSON 49.68 A.

226-476 S.&A. SEARLES 54.70 A.

246-416 M. FATICA

221-447 A. FARINACCI 5.00 A.

225-392 F.&E. LEAGAN 27.01 A.

192-450 J. KACMARCIK 18.94 A.

120.66 A.

247-93 R.&V. BOND 62.58 A.

247-93 R.&V. BOND 62.58 A.

247-93 R.&V. BOND 62.58 A.

247-93 R.&V. BOND 62.58 A.

233-71 243-38 M.&J. DRUCKER 104.05 A.

233-71 243-38 M.&J. DRUCKER 104.05 A.

233-71 243-38 M.&J. DRUCKER 104.05 A.

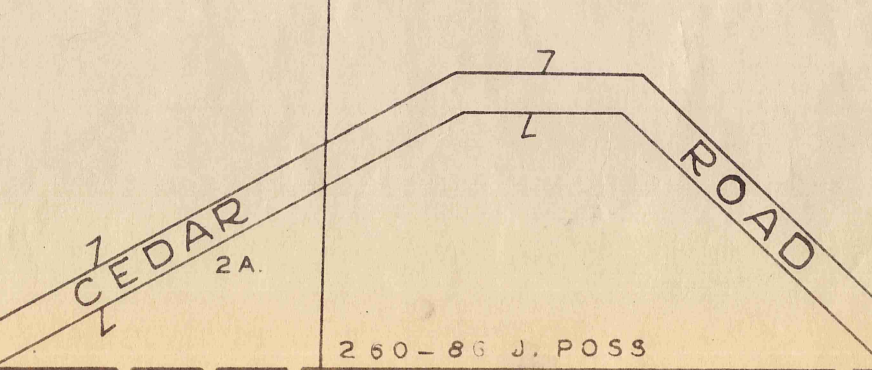
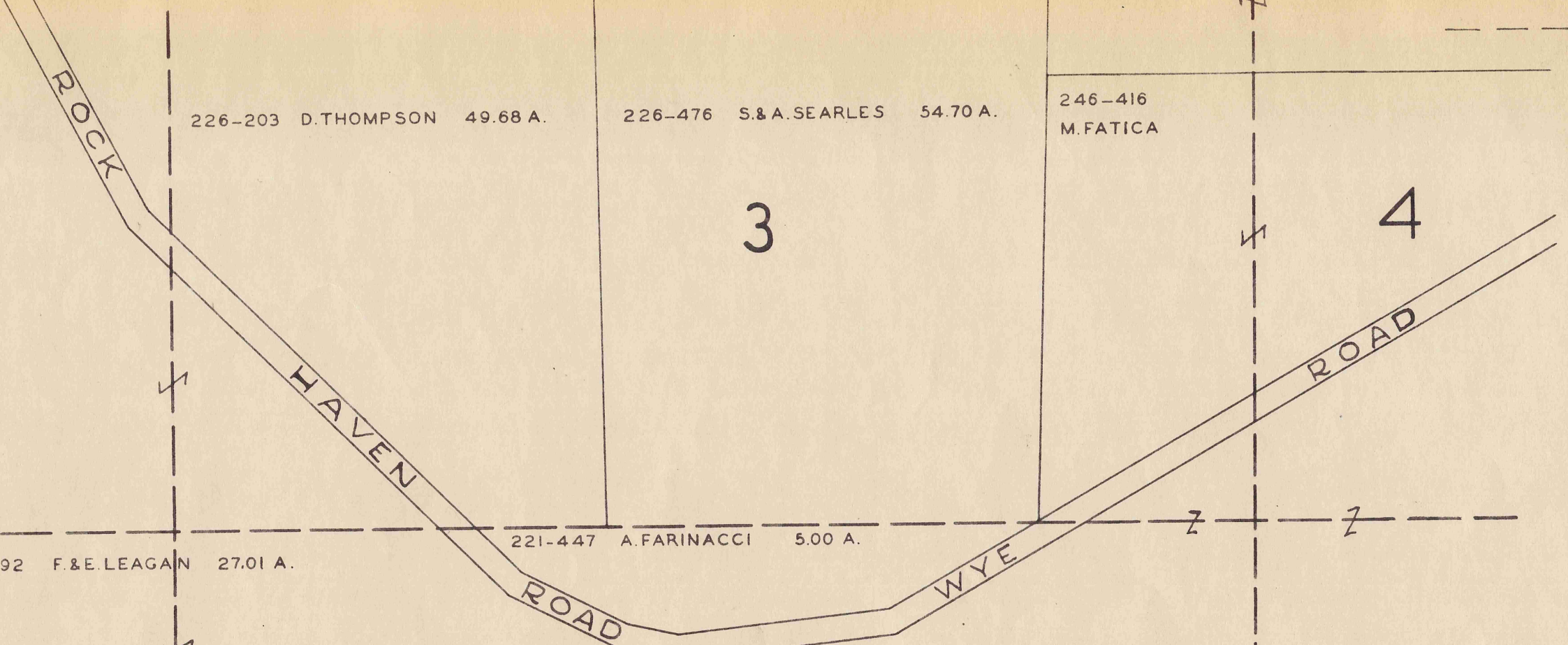
233-71 243-38 M.&J. DRUCKER 104.05 A.

247-93 R.&V. BOND 62.58 A.

247-93 R.&V. BOND 62.58 A.

247-93 R.&V. BOND 62.58 A.

247-93 R.&V. BOND 62.58 A.



TRACT 3



SCALE 1 in. = 300 FT.  
JAN. 1, 1955

A	B	C	D
E	F	G	H
I	J	K	L
M	N	O	P

MUNSON TWP.

FAIR ROCK DEVELOPMENT PLATS VOL. 6 PGS. 51, 53, 55



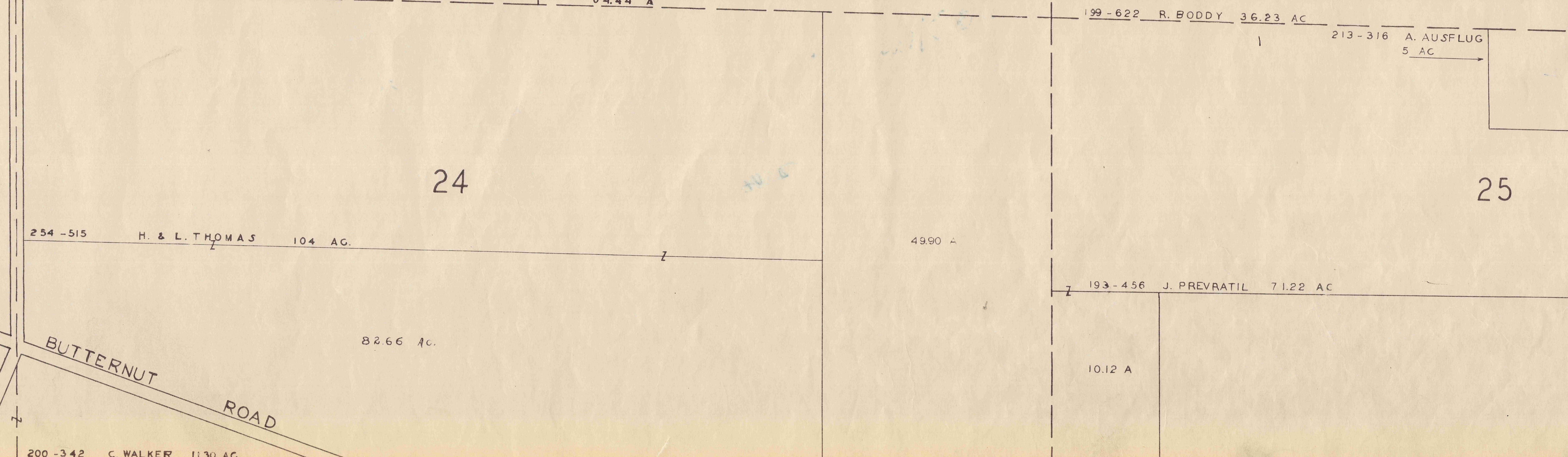
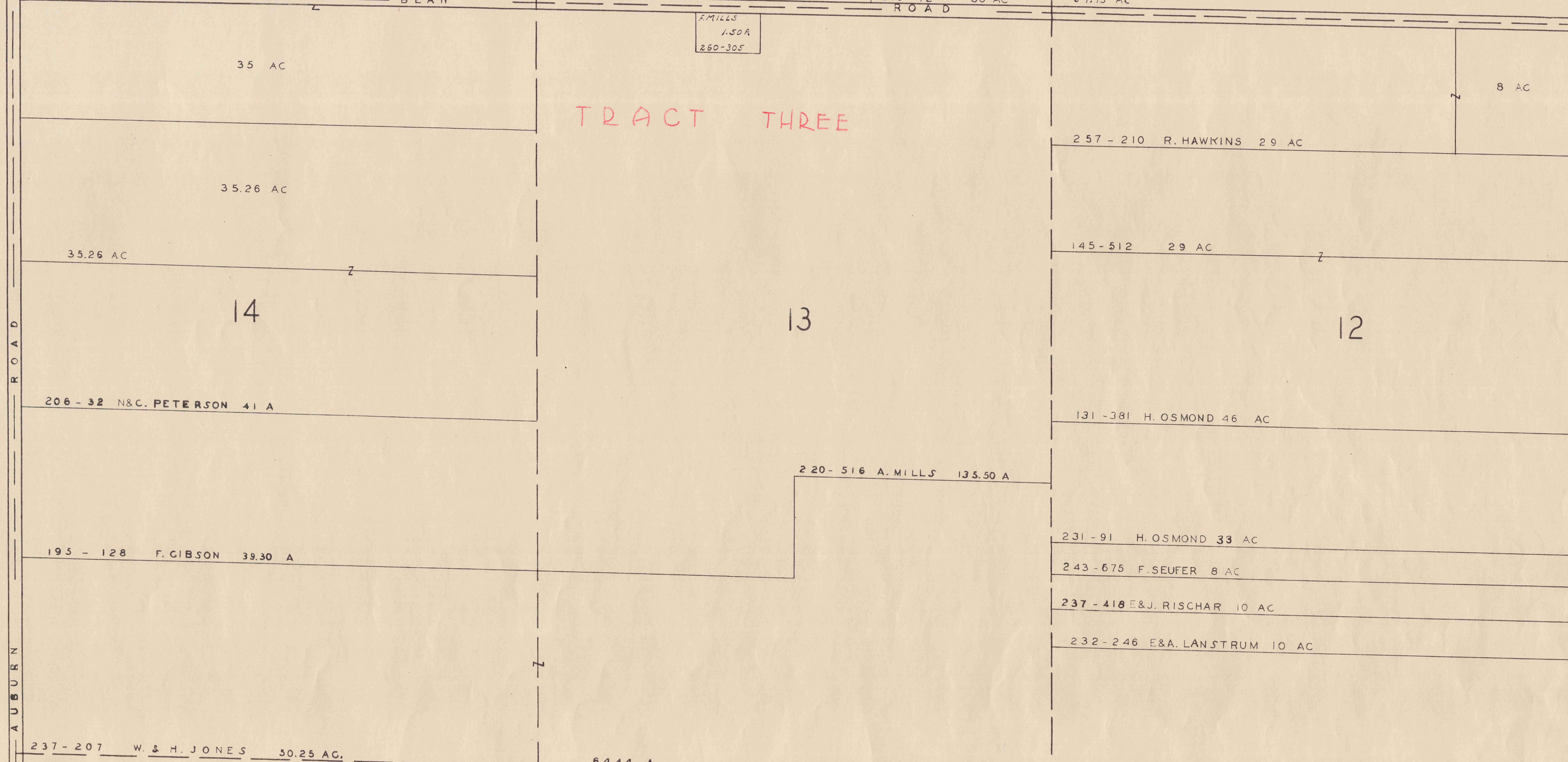
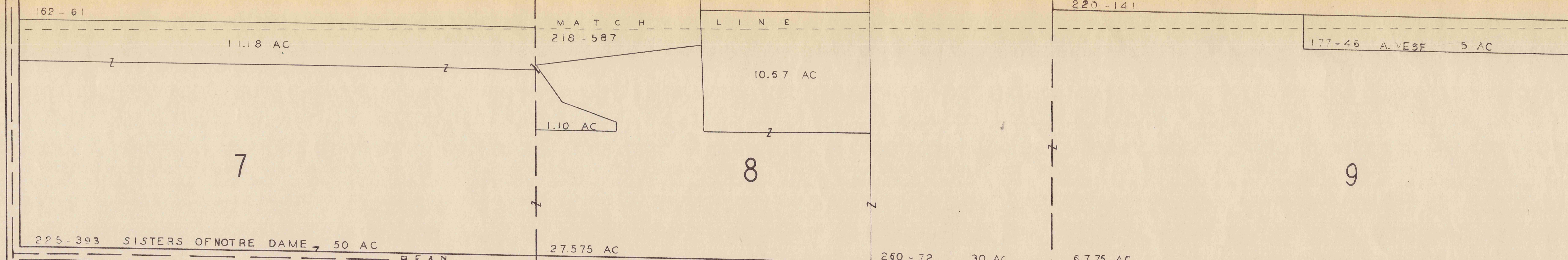
TRACT 3



SCALE 1 IN. = 300 FT.  
JAN. 1, 1955

A	B	C	D
E	F	G	H
I	J	K	L
M	N	O	P

MUNSON TWP.

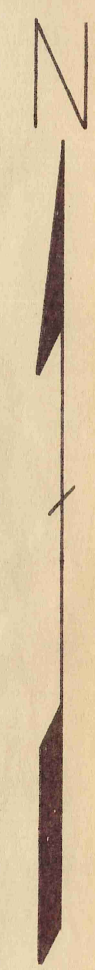


TRACT THREE

257-102  
259-121 W. GRADY  
F. BUTAS  
159-629  
E. SAMONEK  
257-93  
234-283  
245-89  
229-504  
J. HANNAN  
1.5 A

A	B	C	D
E	F	G	H
I	J	K	L
M	N	O	P

SCALE 1"=300 FT  
MUNSON TWP.  
JAN. 1955



AUBURN ROAD

LAKE BASS ROAD

BUTTERNUT ROAD

Cedar Rd

A MILLS  
1.50 A  
260-305

220-516 A. MILLS 135.50 A

257-210 R. HAWKINS 29 AC

145-512 29 AC

131-381 H. OSMOND 46 AC

231-91 H. OSMOND 33 AC

243-675 F. SEUFER 8 AC

237-418 E&J. RISCHAR 10 AC

232-246 E&A. LANSTRUM 10 AC

199-622 R. BODDY 36.23 AC

213-316 A. AUSFLUG 5 AC

7.03 A  
L. HERRINGTON  
200-319

225-393 SISTERS OF NOTRE DAME 50 AC

27575 AC

260-72 30 AC

67.75 AC

35 AC

35.26 AC

35.26 AC

206-32 N&C. PETERSON 41 A

195-128 F. GIBSON 39.30 A

237-207 W. & H. JONES 50.25 AC.

64.44 A

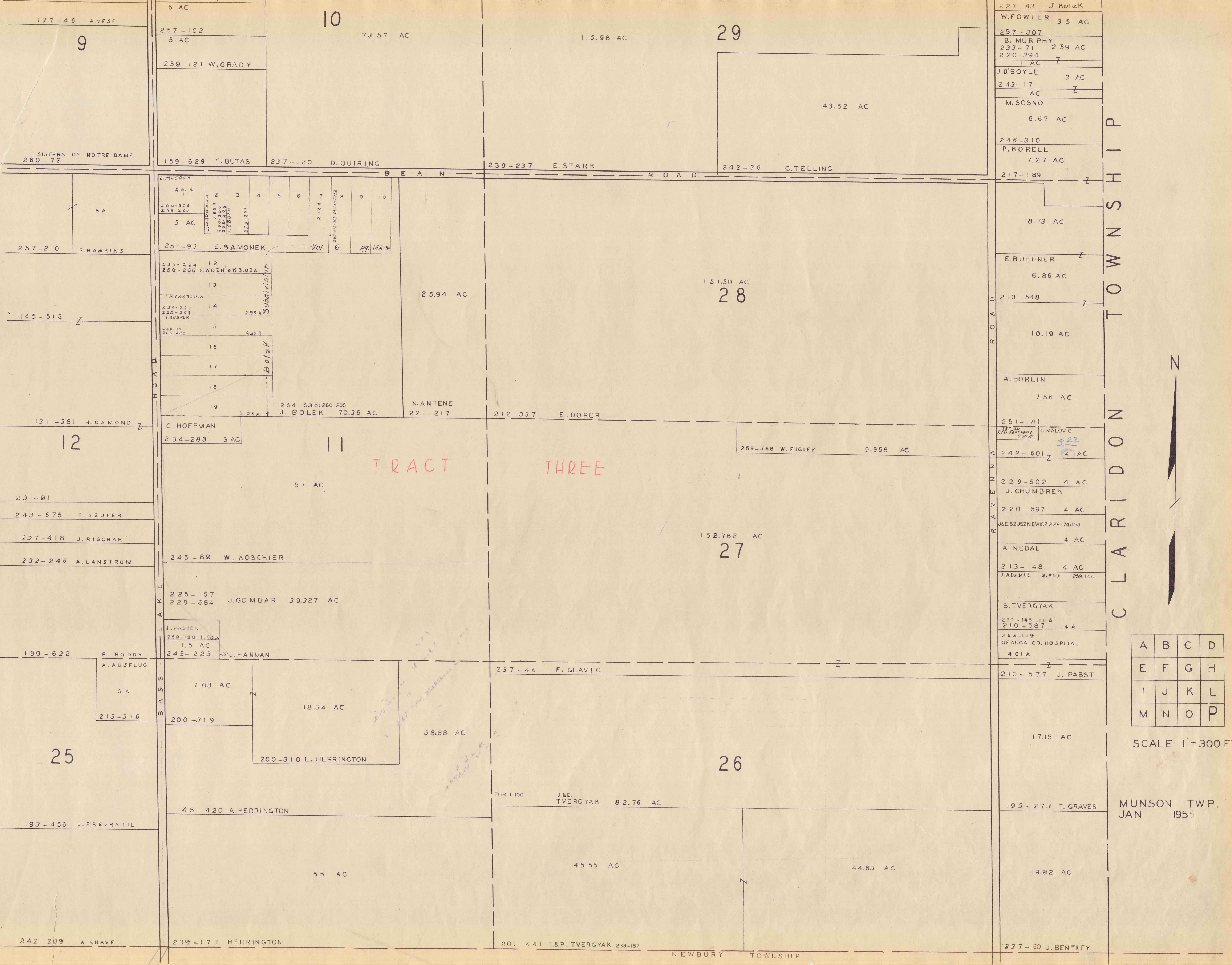
254-515 H. & L. THOMAS 104 AC.

49.90 A

200-342 C. WALKER 11.30 AC.

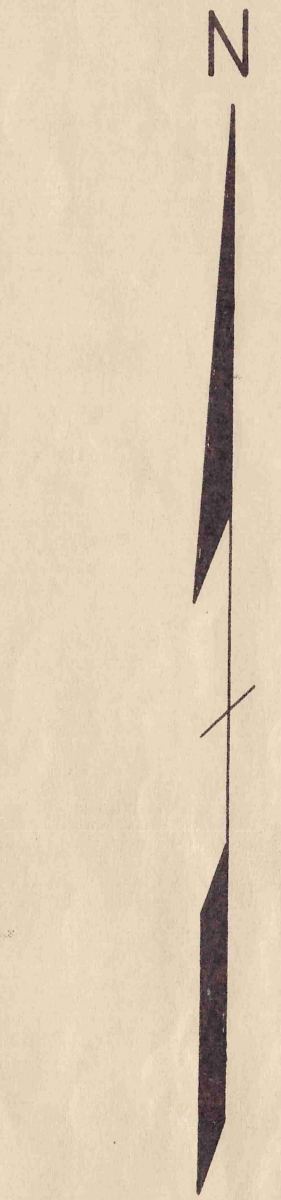
218-35 H. THOMAS JR.  
NEWBURY TOWNSHIP

242-209 A. SHAVE 40 A



223-43	J. KOLEK	3.5 AC
257-307	B. MURPHY	2.59 AC
233-71		
220-394		
1 AC	Z	
J.O. BOYLE		3 AC
243-17		
1 AC	Z	
M. SOSNO		6.67 AC
246-310		
P. KORELL		7.27 AC
217-189		
	Z	
		8.73 AC
E. BUEHNER		6.86 AC
213-548		
	Z	
		10.19 AC
A. BORLIN		7.56 AC
251-181		
C. MALOVIC		0.78 AC
242-601		4 AC
229-502		4 AC
J. CHUMBREK		
220-597		4 AC
J&E. SZUSZKIEWICZ		229-74-103
		4 AC
A. NEDAL		
213-148		4 AC
J. ADAMEL		3.85 AC
259-144		
S. TVERGYAK		
259-145		1.10 AC
210-587		4 AC
263-119		
GEAUGA CO. HOSPITAL		4.01 AC
210-577		J. PABST
		17.15 AC
195-273		T. GRAVES
		19.82 AC
237-60		J. BENTLEY

CLARIDON TOWNSHIP



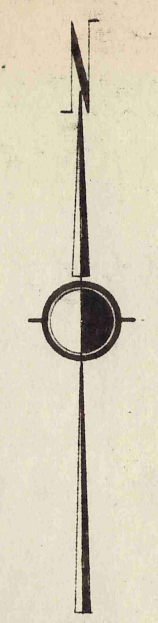
A	B	C	D
E	F	G	H
I	J	K	L
M	N	O	P

SCALE 1"=300 FT.

MUNSON TWP.  
JAN 1955

# MUNSON TP. (FOWLERS MILL & VICINITY)

Lot 34 #1, 254-512 D. & N. Reiston  
" 34 #2, 255-583 Munson Fire Dept, Inc.

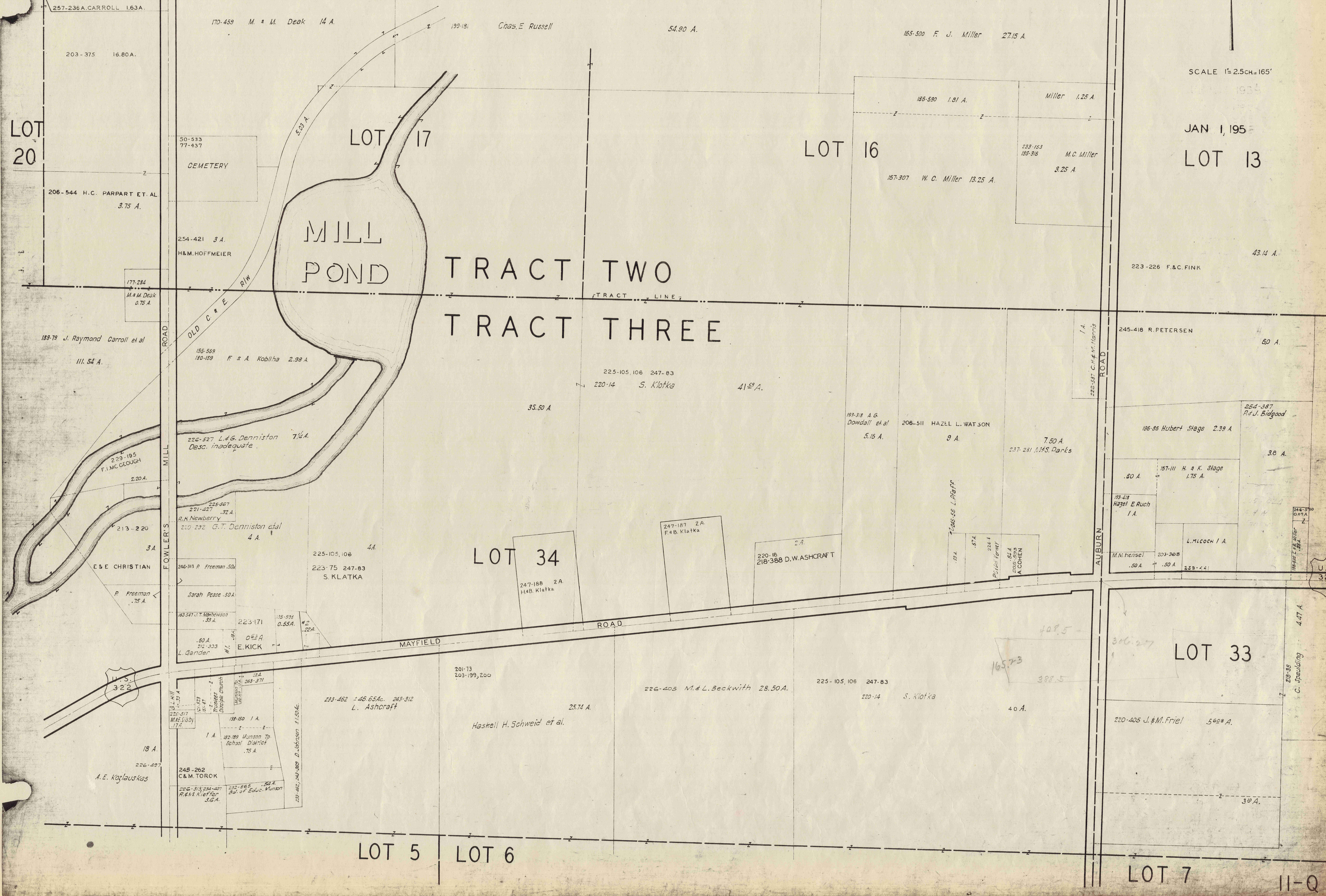


SCALE 1" = 2.5 CH. 165'

JAN 1, 195

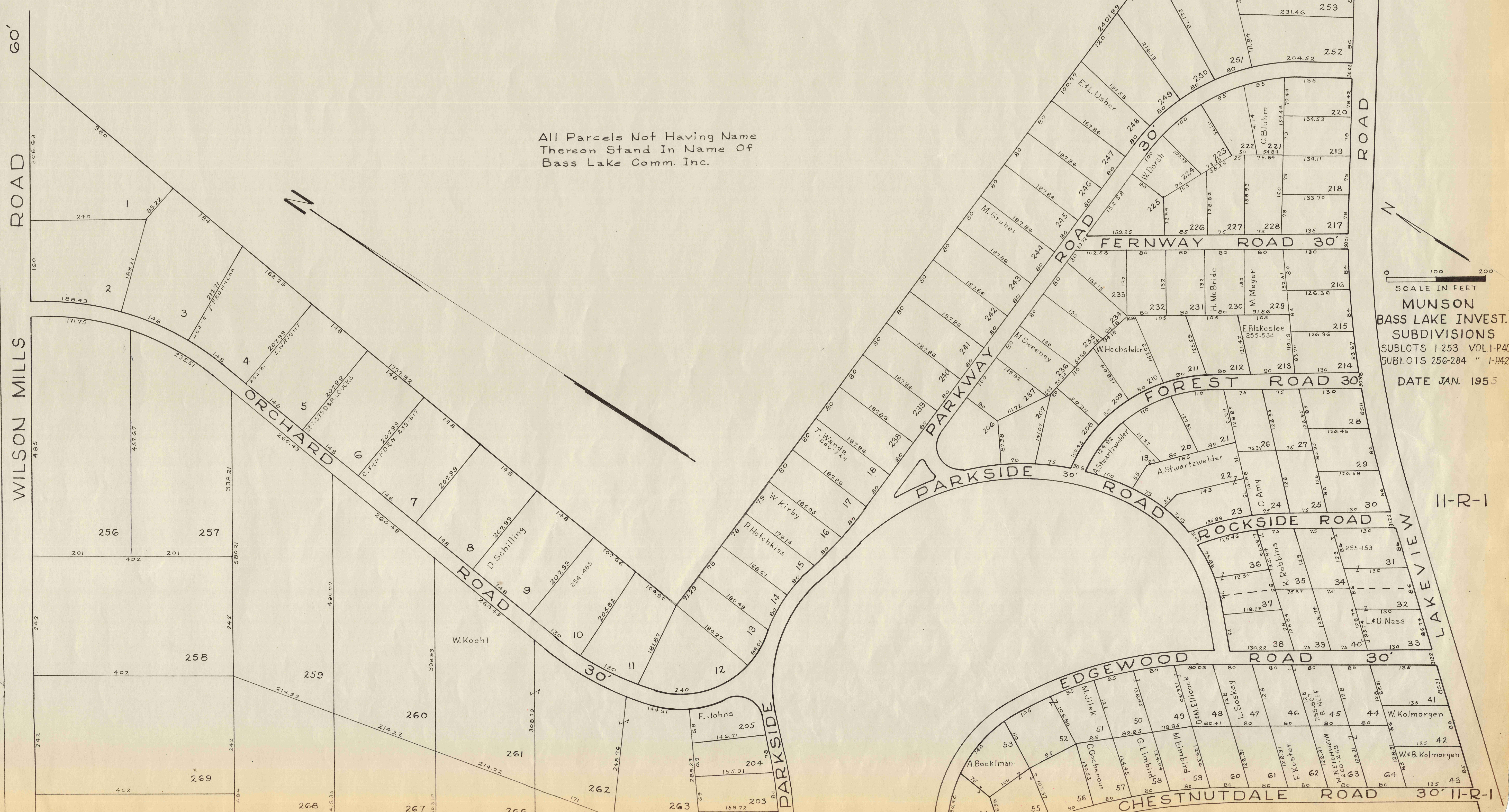
LOT 13

LOT 20

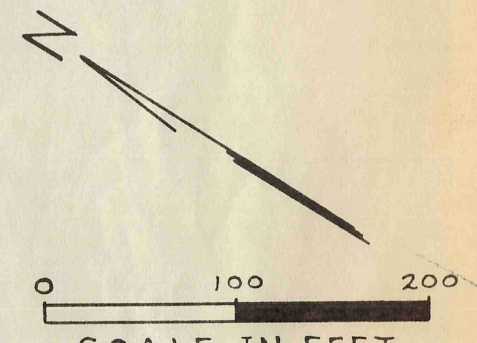


LOT 5 LOT 6

LOT 7 II-Q



All Parcels Not Having Name Thereon Stand In Name Of Bass Lake Comm. Inc.



SCALE IN FEET  
0 100 200

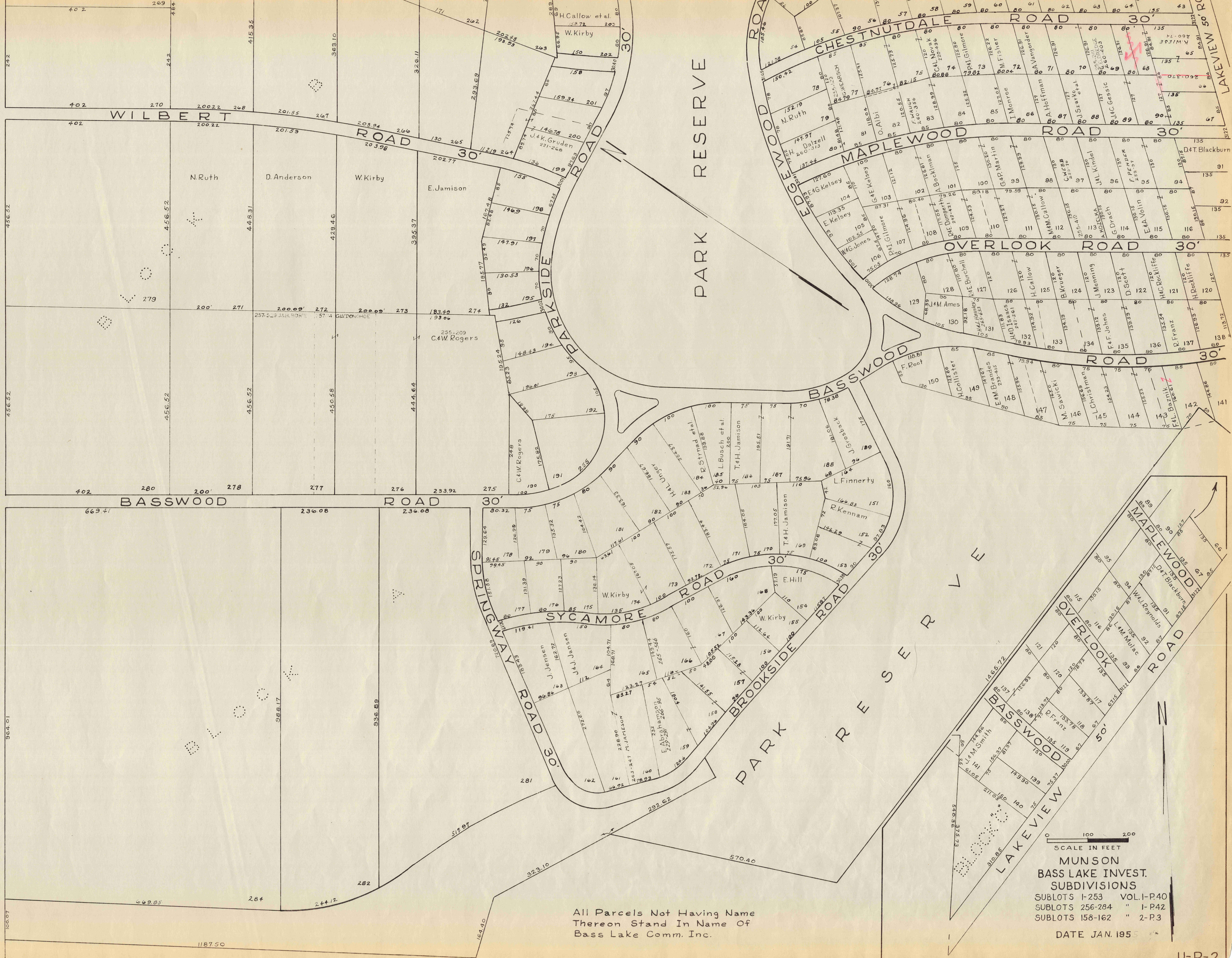
MUNSON  
BASS LAKE INVEST.  
SUBDIVISIONS  
SUBLOTS 1-253 VOL. I-P40  
SUBLOTS 256-284 " I-P42

DATE JAN. 1955

11-R-1

CHESTNUTDALE ROAD 30' 11-R-1

WILSON MILLS ROAD 60'



All Parcels Not Having Name Thereon Stand In Name Of Bass Lake Comm. Inc.

SCALE IN FEET  
 0 100 200  
**MUNSON**  
**BASS LAKE INVEST.**  
**SUBDIVISIONS**  
 SUBLOTS 1-253 VOL. I-P40  
 SUBLOTS 256-284 " 1-P42  
 SUBLOTS 158-162 " 2-P3  
 DATE JAN. 1955

